

The Trumpet 2.52 Update

IMPORTANT ANTI-PIRACY NOTE

To improve protection against software piracy, several identification tools are now applied to each individual instrument. This means that any pirated instrument (or nki file) downloaded from the Internet, or otherwise distributed, can be traced back to its original purchaser. Hence, never make your instrument/nki files available to anyone!

How to update The Trumpet to version 2.52 for Kontakt 3.5

The ZIP-file you have downloaded contains the folder “The Trumpet v. 2.52” and this pdf document.

Please note that this version of The Trumpet (2.52) will only work on the new Kontakt (full version) and Kontakt Player 3.5 or higher.

You may update from any earlier version of The Trumpet (1.01 – 2.51).

The update procedure is very simple:

1. Close the Kontakt application and locate the folder “The Trumpet”, in which the previous trumpet version is installed (usually Samplemodeling -> The Trumpet). Rename it, for example, to “The Trumpet v 1.01”;
2. Copy the downloaded folder “The Trumpet v. 2.52” into a destination of your choice. We recommend to place it into the same folder “Samplemodeling”;
3. Copy the file “Samples.nkx” (not “Samples.nkc”!) from the “old” folder “The Trumpet...” into the new folder “The Trumpet v. 2.52”.

The content of the new trumpet version 2.52 is now successfully copied into your system.

If you have the full Kontakt or the free Player software (version 3.5 or higher) already installed on your computer, skip the items 1. & 2. below. Otherwise:

1. Download the (free) Kontakt Player 3.5, using the following links:

PC:

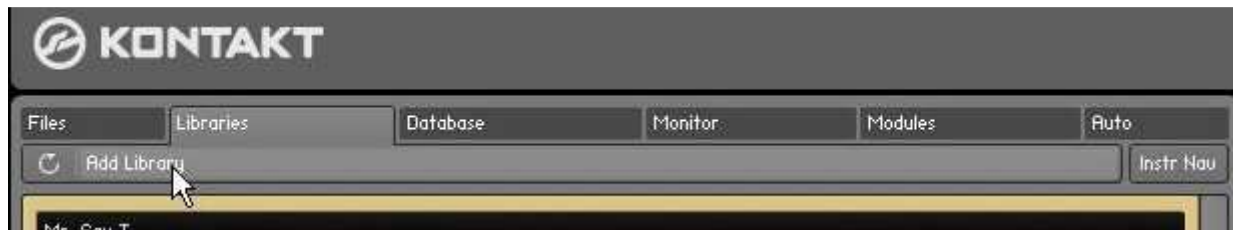
http://www.sample-modeling.com/Kontakt_Player_3/KontaktPlayer3_Win.zip

Mac:

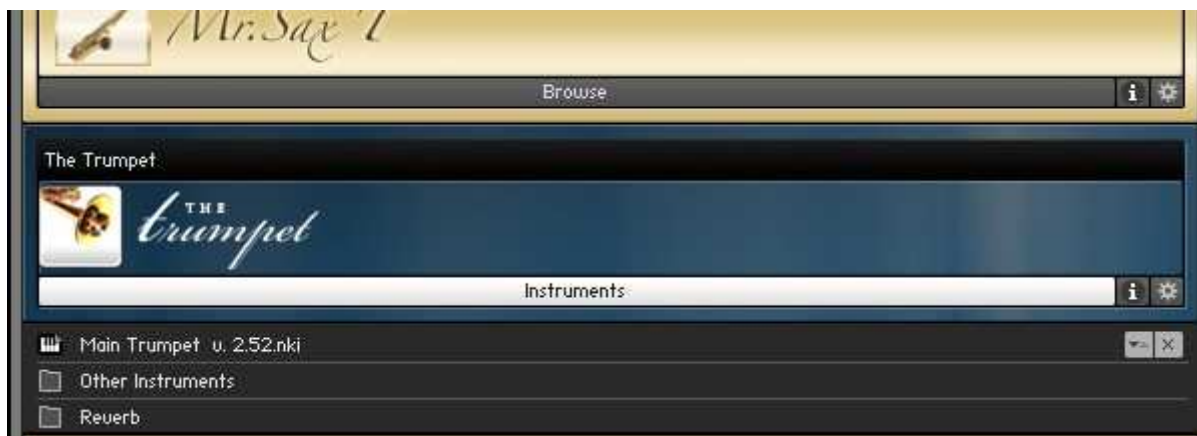
http://www.sample-modeling.com/Kontakt_Player_3/KontaktPlayer3_OSX.zip

2. Install it on your system following the instructions displayed during the installation

3. Start your Kontakt/Kontakt Player, open the tab “Libraries” in the Kontakt browser and click on “Add Library”:

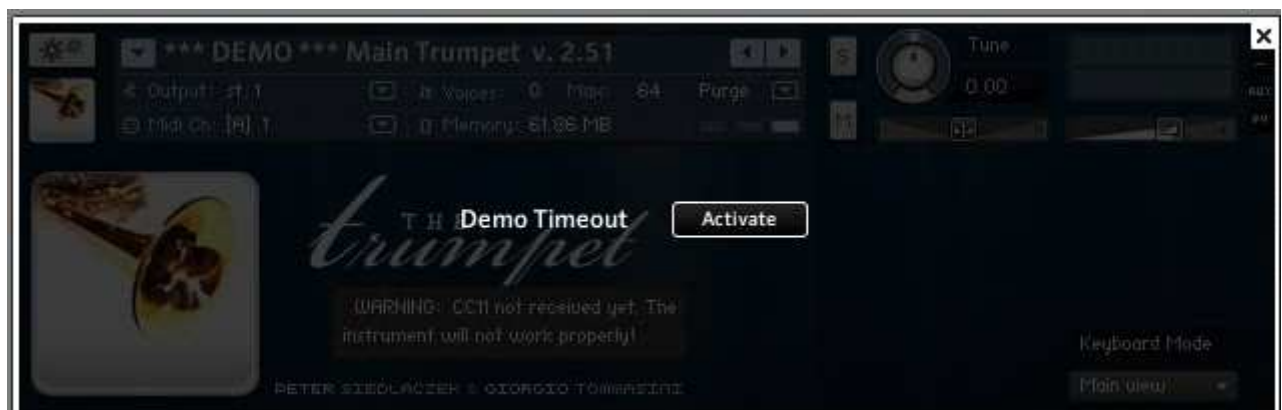


4. Navigate to the new folder “The Trumpet 2.52” you have copied into the folder “Samplemodeling” and click on “OK”.
Close the Kontakt application and restart it again. The Trumpet v. 2.52 is now successfully integrated into the Kontakt software and appears in the browser:

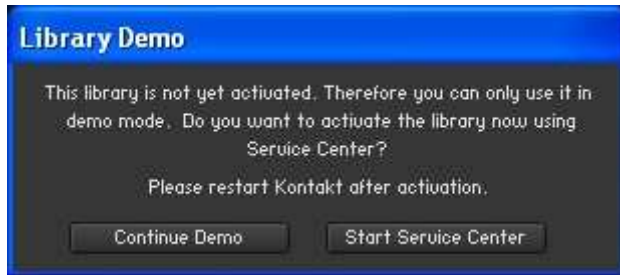


Click on the “i” icon to the right to access the [Trumpet](#) documentation. Please note that the [Kontakt](#) documentation can be accessed via the Kontakt Help menu in the left upper corner of the browser.

5. Launch the Main Trumpet double-clicking on it. If your Kontakt recognized the authorization on your system, **The Trumpet is ready to play**. If not, you will see the instrument in the locked status:

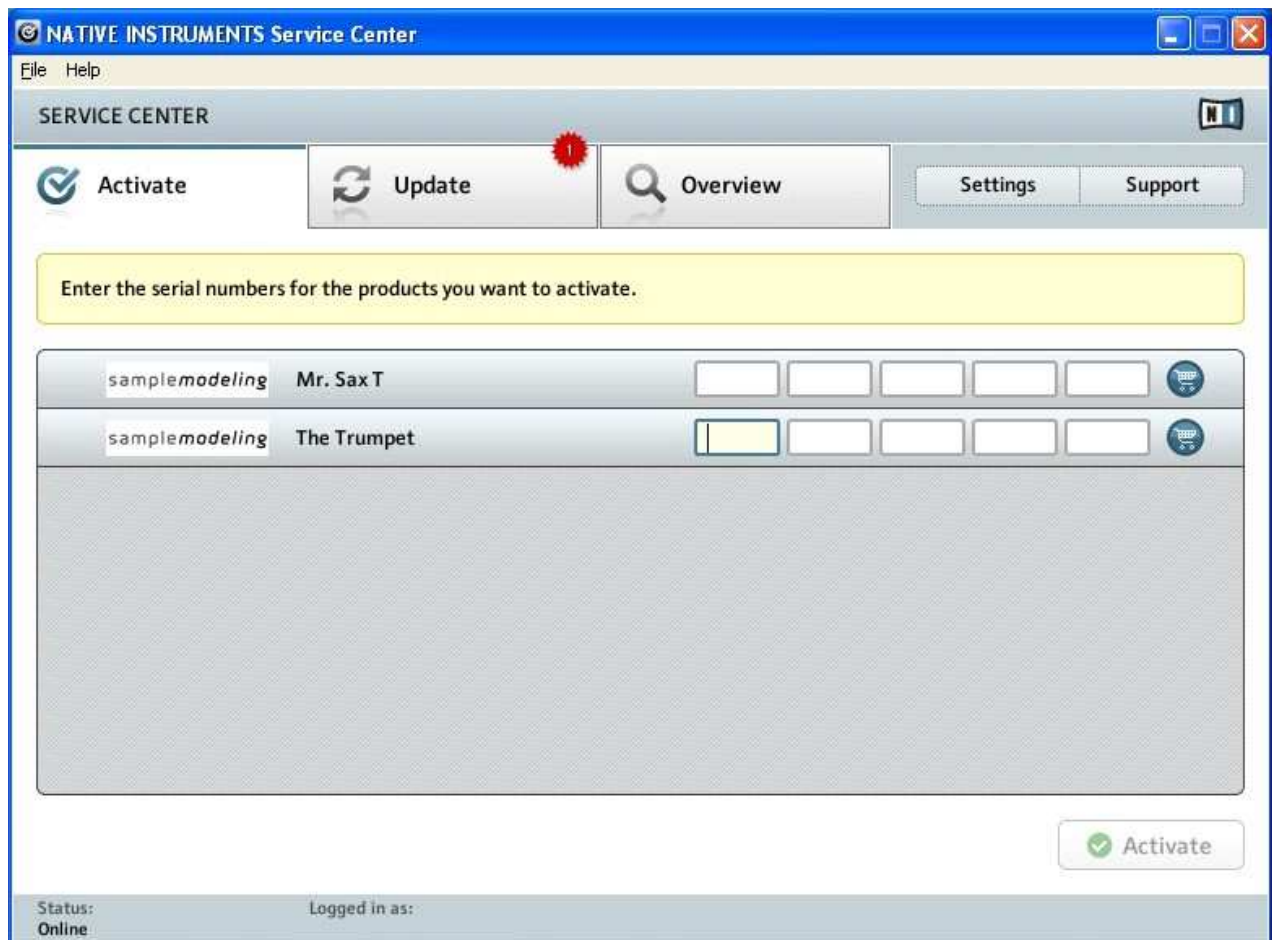


6. Click on “Activate”; the following window opens:



7. Click on “Start Service Center”. Please note that due to a new copy protection mechanisms The Trumpet will not work in demo mode, so the option “Continue Demo” is NOT applicable.

8. The Service Center opens:



Enter your personal license number (serial number) and click on “Activate”.
Your Trumpet software is now successfully activated on your system.

In case of any difficulties please contact the technical support at:

<http://www.native-instruments.com/support.info>

What's new in The Trumpet v. 2.52 for Kontakt 3.5

CC100 (mute control via MIDI) bug fix

Since v. 2.51:

1. Channel Aftertouch (CC129) now recognized and mappable to any controller.
2. Extended CC remapping (all the Trumpet controllers can now be assigned to any CC)
3. New features and improvements of Kontakt 3.5 (64 bit functionality, improved compatibility with ProTools and other hosts, etc).

* * *